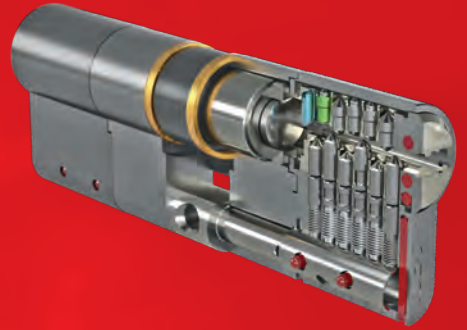


R ME
PATENTED

Mobile Element



ISEO[®]
ULTIMATE ACCESS TECHNOLOGIES

**ULTIMATE ACCESS TECHNOLOGIES
TO UNLOCK YOUR FREEDOM TO MOVE.**



R ME

PATENTED

MOBILE ELEMENT



ISEO has designed and patented the new R ME system, which combines functionality and design with the highest security standards.



Certification
SKG 3 stars



DIN EN 1303:2015-08
|1|6|0|B|0|C|6|D|



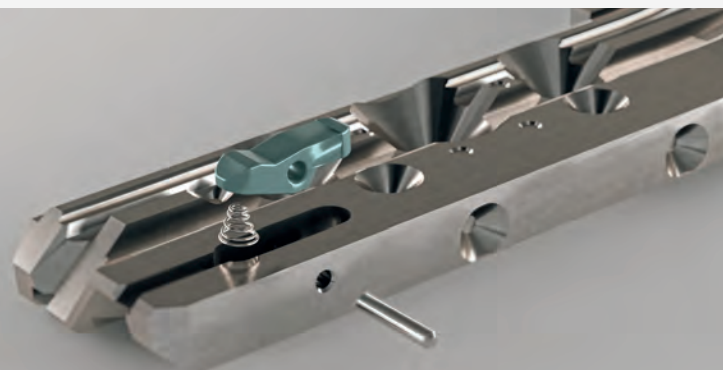
Multiprofile



Patented
until 2038

The mobile elements, one on each side of the key, are fixed with a pin, which also serves as a rotation axe, and work together with a spring, which brings the mobile element back into its original position after every movement.

**MOBILE
ELEMENT**





KEY

Features

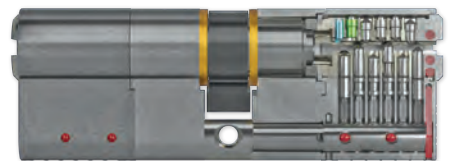
The multiprofile reversible key has an innovative mobile element, which ensures an additional advantage in terms of security.



CYLINDER

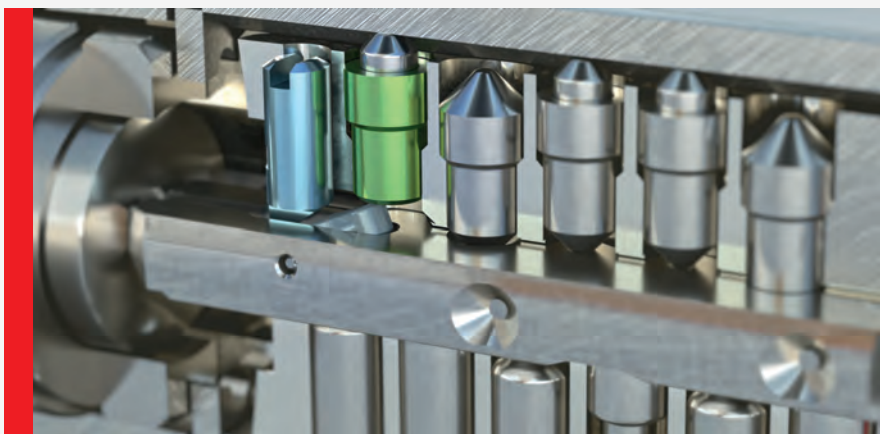
Features

Thanks to three coding rows, the R ME cylinder ensures top permutation calculation, ideal for multilevel master key systems.



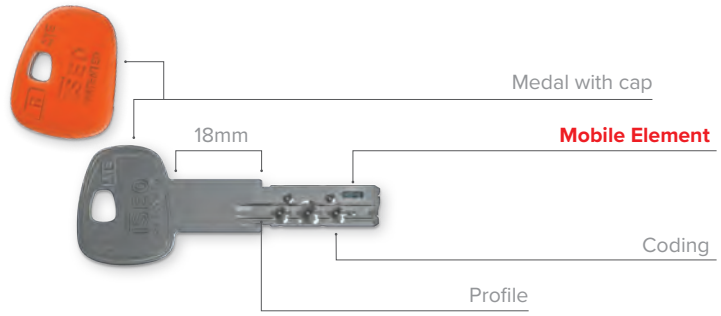
The protection with customer profile prevents non-authorized duplications even more and allows to keep track of who owns the keys, making the cylinder suitable for service centers and security doors.

MOBILE ELEMENT

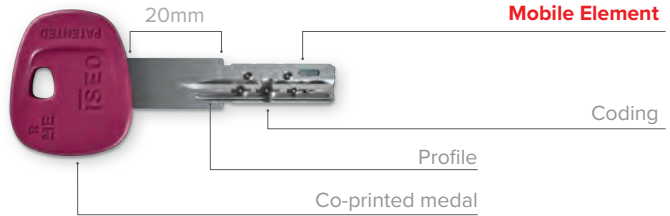


The key with the anti-slip and ergonomic cap has a 18 mm long neck, while the key with the co-printed medal has a 20 mm long neck

Version with cap

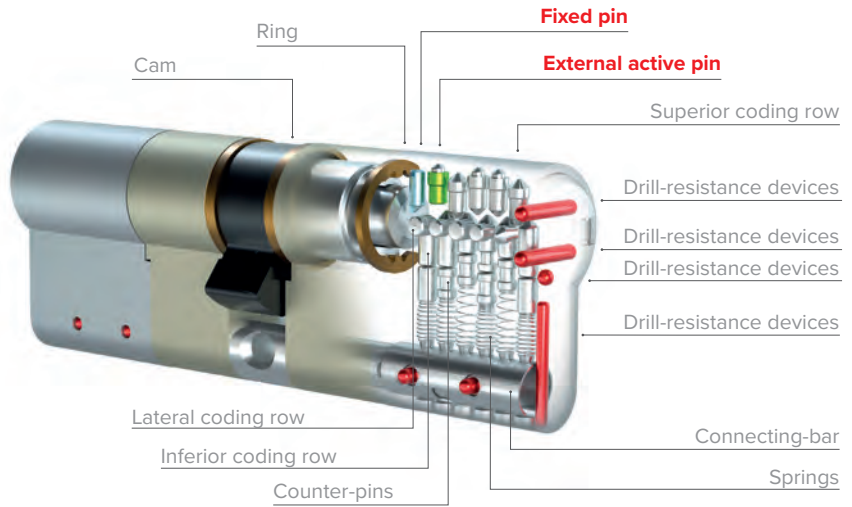


Co-printed version

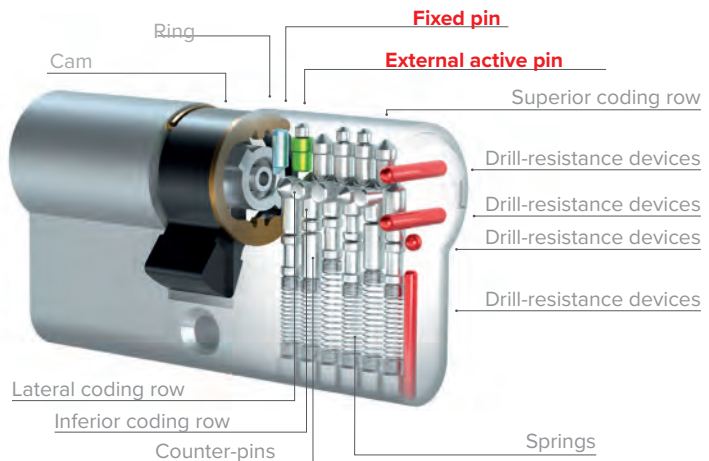


The patented cylinder R ME is modular or compact, suitable for each security door.

Modular version



Compact version





Iseo Serrature s.p.a.
Via San Girolamo, 13
25055 Pisogne BS, Italy
Tel. +39 0364 8821
iseo@iseo.com

iseo.com